

Welcome to

OPENING THE WORLD OF CATASTROPHE MODELS PUBLIC EVENT

EIOPA public online event with stakeholders

16 May 2023 from 13:00 – 17:00 CEST

During the event, you can submit written questions or comments via www.slido.com

To do so, enter the event hashtag [#OWC-Models](https://twitter.com/OWC-Models) or [scan the QR code](#).

Visit [slido.com](https://www.slido.com)



[#OWC-Models](https://twitter.com/OWC-Models)

Audience interaction: how to join the conversation

Written comments/questions via slido

- Go to slido.com, enter the event code **#OWC-Models** and your name
- Submit your written comments/questions or upvote topics of interest submitted by other participants

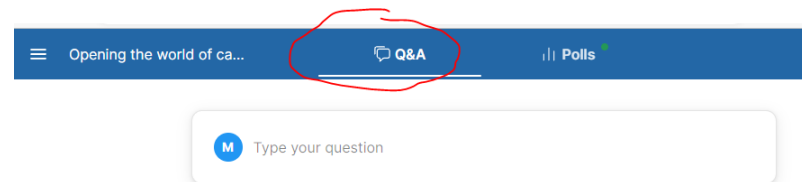
Please note: We will not accept written comments/questions which are:

- Submitted by people without full names / organisation
- Offensive
- Outside the scope of the event

Visit slido.com



#OWC-Models





THE CLIMADA APP

THE CLIMADA-APP

- Data and models on climate-related risks are crucial.
- EIOPA clearly depicted the availability of tools to be one major challenge.
- EIOPA aims to support the modelling and management of climate change risks, by promoting the development of open-source models.
- The CLIMADA-app developed by EIOPA is a case study to encourage further developments, help stakeholders to start doing cat modelling in an easy way to understand their risks...
- This is in line with EIOPA's efforts to build a bridge between the latest development in climate science and the insurance industry/supervisors.

THE CLIMADA-APP

- The CLIMADA-app is a user interface which should facilitate the use of the open-source cat model [CLIMADA](#). The user interface is a free software. You can redistribute and/or modify it.
- The CLIMADA-app is installed on your desktop. It can work offline and online.

CLIMADA-APP

- link to website and documentation [Open-source tools for the modelling and management of climate change risks \(europa.eu\)](#)
- If you have any comments/questions contact EIOPA: [EIOPA website](#) – About – Contact – General enquiry - please [send us your enquiry.](#)

OPENING THE WORLD OF CATASTROPHE MODELS PUBLIC EVENT

EIOPA public online event with stakeholders

BREAK

The event will resume at 14:50 CEST

Visit [slido.com](https://www.slido.com)



#OWC-Models

Slido question: Do you know OASIS, GEM, IDF, RDH, NGFS?



THANK YOU!

For more information visit:
<https://www.eiopa.europa.eu>



Annex

Exposure

- Select exposure Load exposure

Exposure

Hazard

- Select hazard Load hazard

Hazard

Scenario

- Historical events Future projection

Scenario

Time Horizon

Time Horizon

Annual Growth



 RUN

- Czechia
- Denmark
- Estonia
- Finland
- France
- Germany
- Greece
- Hungary
- Iceland
- Ireland
- Italy
- Latvia
- Liechtenstein
- Lithuania
- Luxembourg
- Malta
- Netherlands
- Norway
- Poland
- Portugal
- Romania
- Slovakia
- Slovenia
- Spain
- Sweden
- Switzerland
- United Kingdom

posure
d
rojection
10.0

Exposure

Select exposure Load exposure

LOAD

Hazard

Select hazard Load hazard

Hazard

Scenario

Historical events Future projections

Scenario

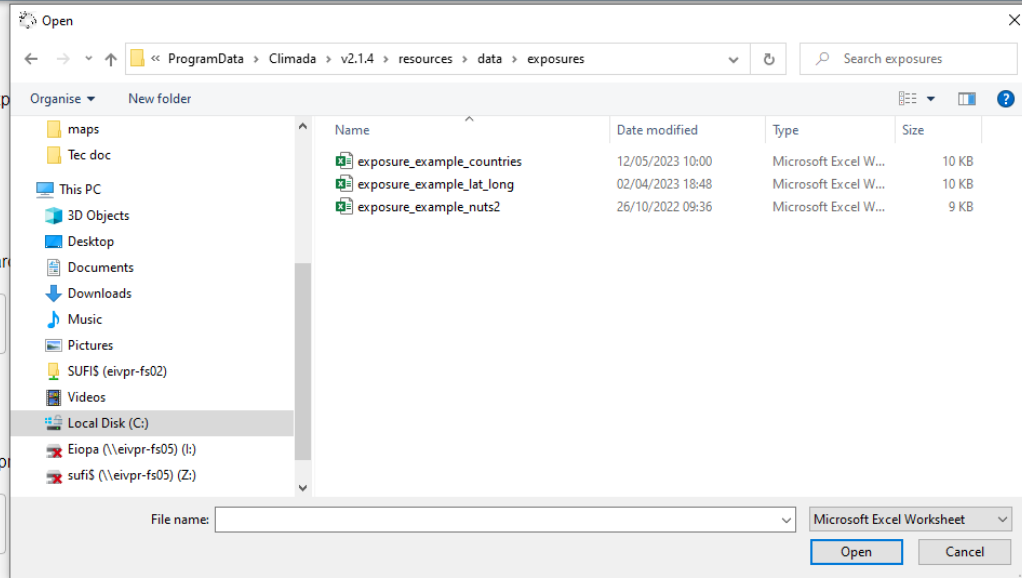
Time Horizon

Time Horizon

Annual Growth



RUN



Exposure

Select exposure Load exposure

Exposure

Switzerland

Hazard

Select hazard Load hazard

Hazard

Storm Europe

Scenario

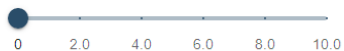
Historical events Future projection

Scenario

Time Horizon

Time Horizon

Annual Growth



Exposure

Select exposure Load exposure

Exposure

Switzerland ✕ ▾

Hazard

Select hazard Load hazard

Hazard

Storm Europe ▾

Scenario

Historical events Future projection

Scenario

Historical ▾

Time Horizon

Time Horizon ▾

Annual Growth



 RUN

 Scenario parameters set successfully. ✕

Exposure

Select exposure Load exposure

Exposure

Switzerland ✕ ▼

Hazard

Select hazard Load hazard

Hazard

Storm Europe ▼

Scenario

Historical events Future projection

Scenario

Historical ▼

Time Horizon

Time Horizon

1940 - 2014 ▼

Annual Growth



 RUN



Exposure

Select exposure Load exposure

Exposure

Switzerland ✕ ▼

Hazard

Select hazard Load hazard

Hazard

Storm Europe ▼

Scenario

Historical events Future projection

Scenario

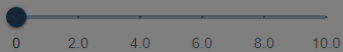
Historical ▼

Time Horizon

Time Horizon

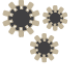
1940 - 2014 ▼

Annual Growth



Running scenario

Setting up hazard...



15%

Exposure

Select exposure Load exposure

Exposure ▼

Hazard

Select hazard Load hazard

Hazard ▼

Scenario

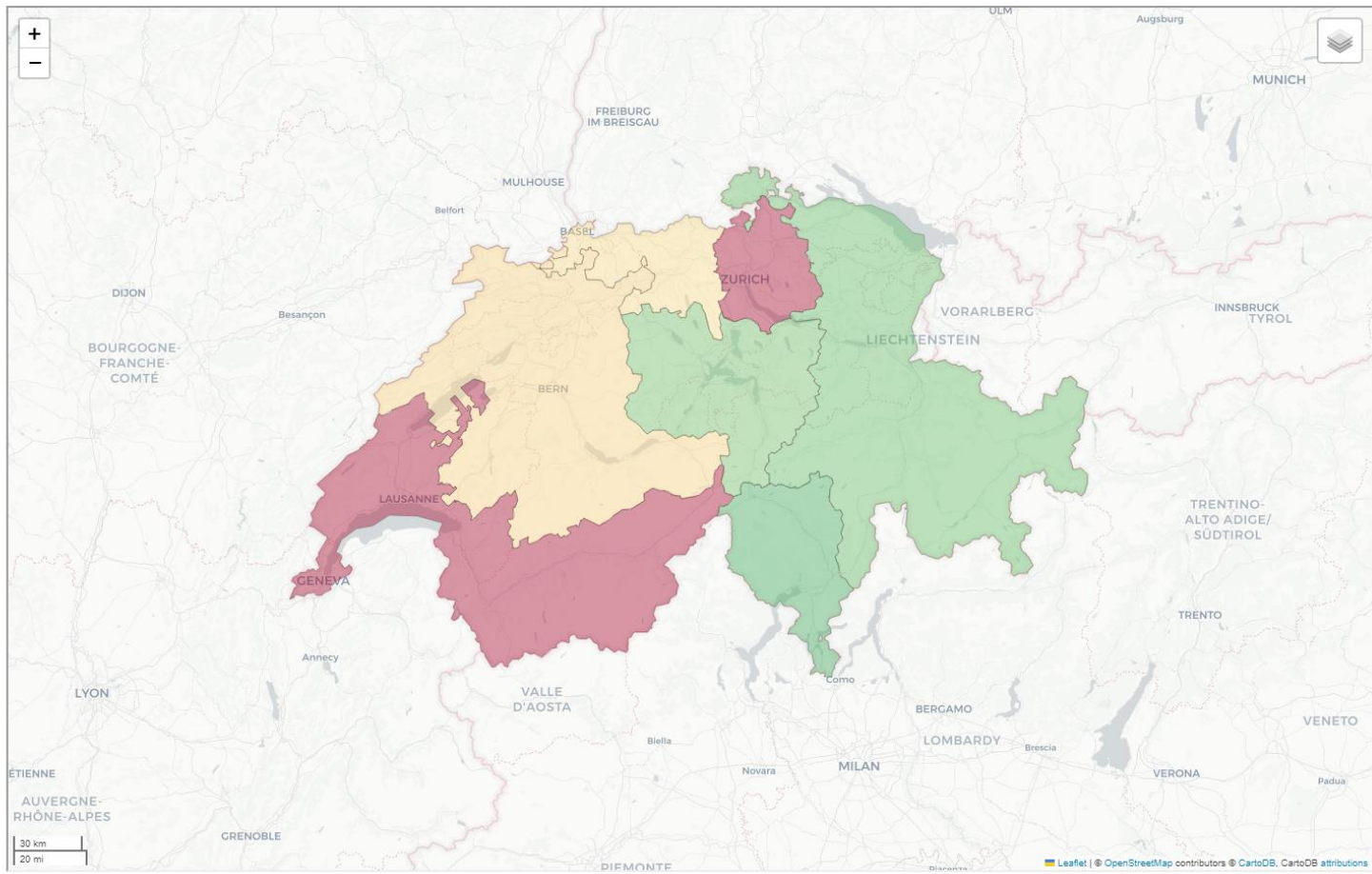
Historical events Future projection

Scenario ▼

Time Horizon

Time Horizon ▼

Annual Growth



Exposure

- Select exposure
- Load exposure

Exposure ▼

Hazard

- Select hazard
- Load hazard

Hazard ▼

Scenario

- Historical events
- Future projection

Scenario ▼

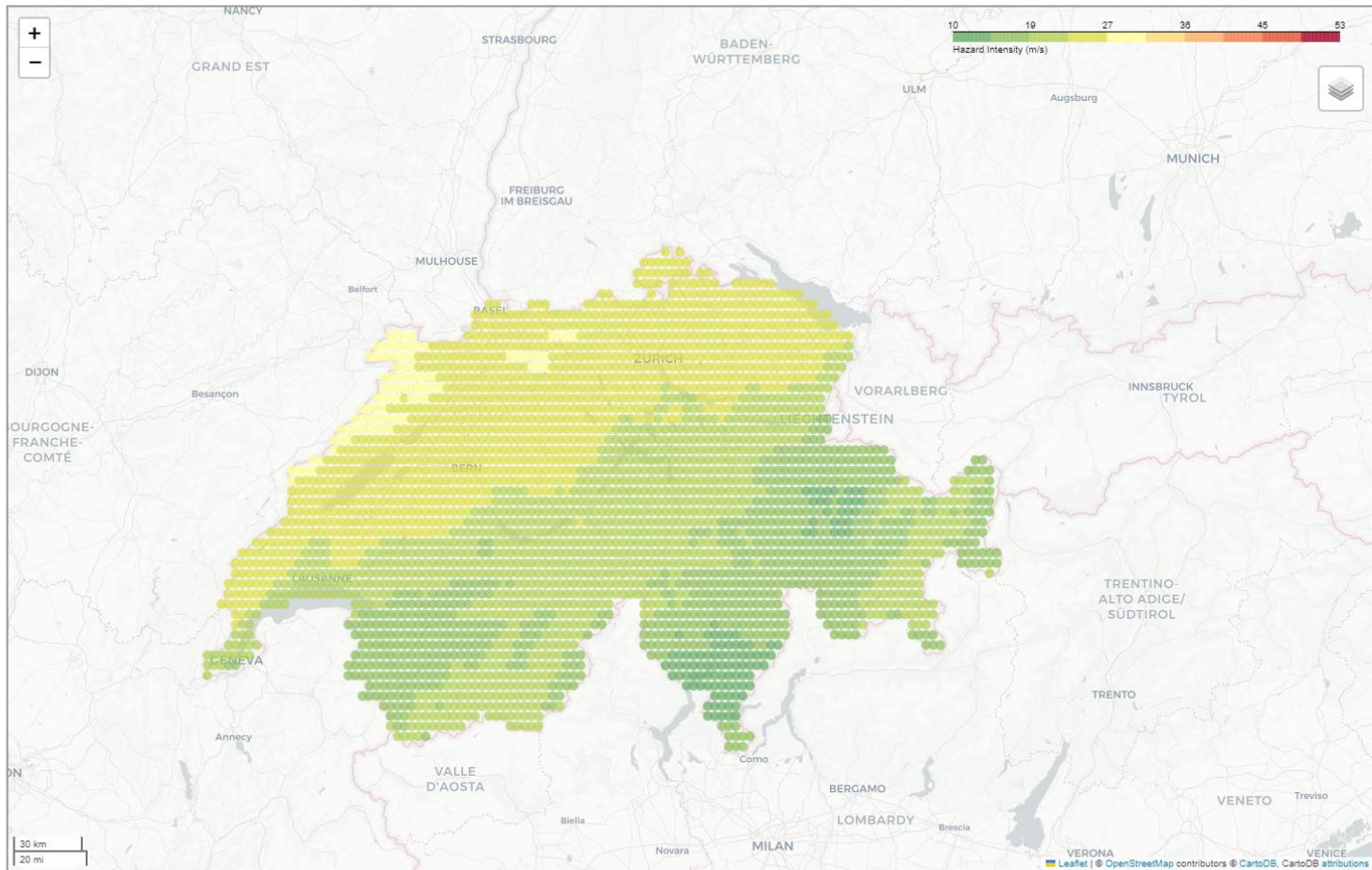
Time Horizon

Time Horizon ▼

Annual Growth



RUN



EXPOSURE

HAZARD

RISK

Exposure

Select exposure Load exposure

Exposure

Hazard

Select hazard Load hazard

Hazard

Scenario

Historical events Future projection

Scenario

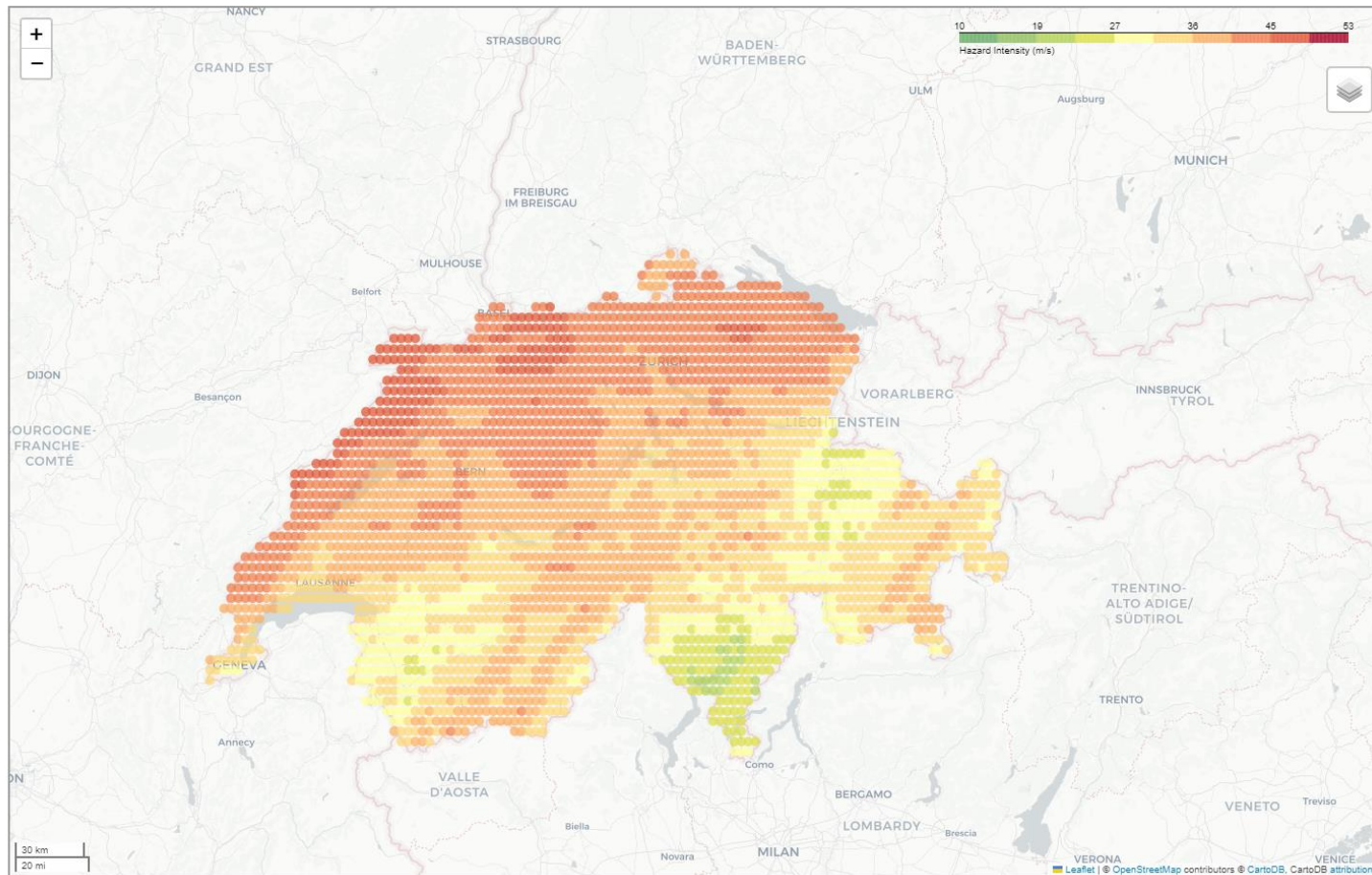
Time Horizon

Time Horizon

Annual Growth



RUN



EXPOSURE

HAZARD

RISK

Exposure

Select exposure Load exposure

Exposure

Hazard

Select hazard Load hazard

Hazard

Scenario

Historical events Future projection

Scenario

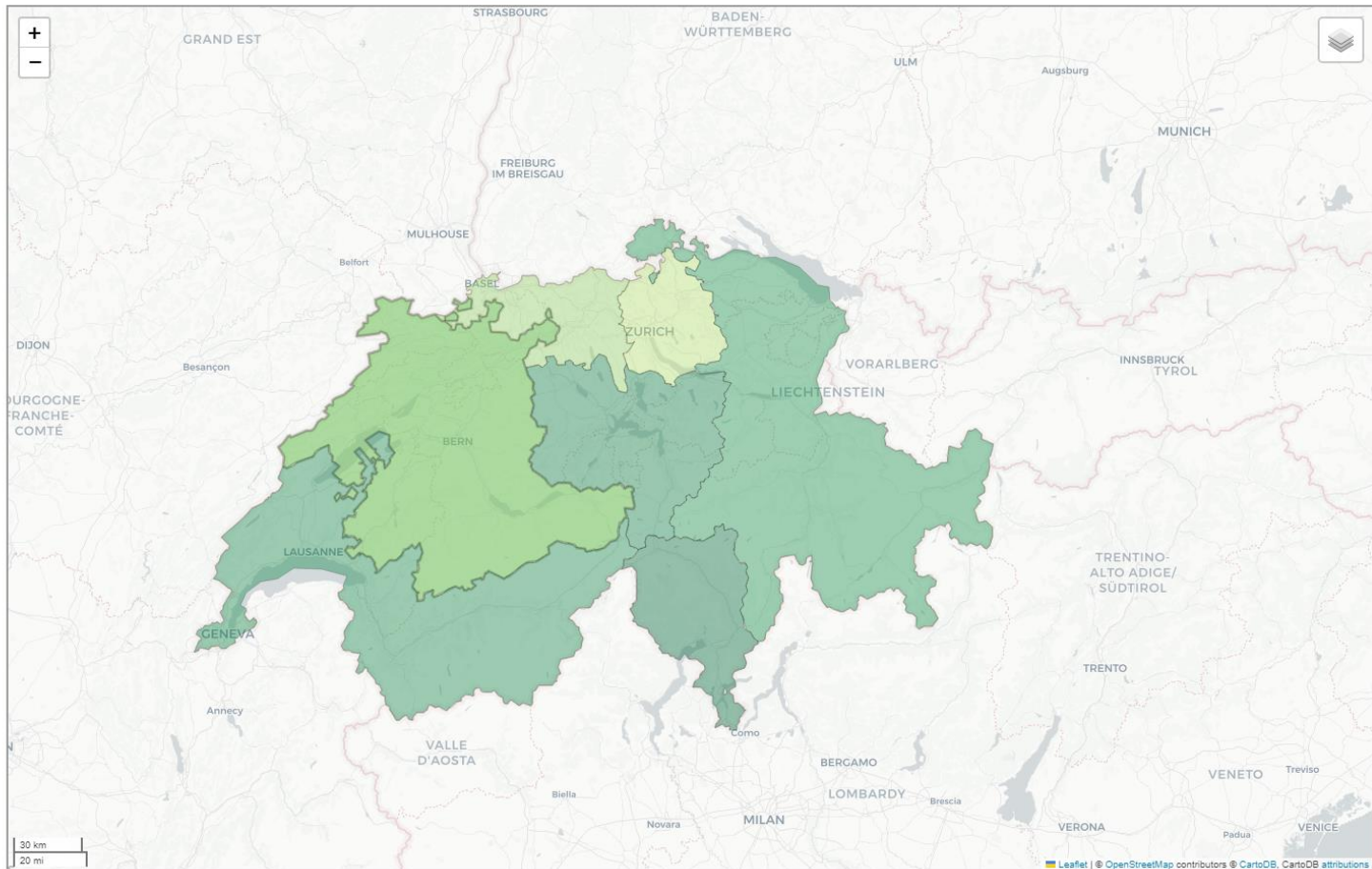
Time Horizon

Time Horizon

Annual Growth



RUN



EXPOSURE

HAZARD

RISK

Exposure

Select exposure Load exposure

Exposure

Hazard

Select hazard Load hazard

Hazard

Scenario

Historical events Future projection

Scenario

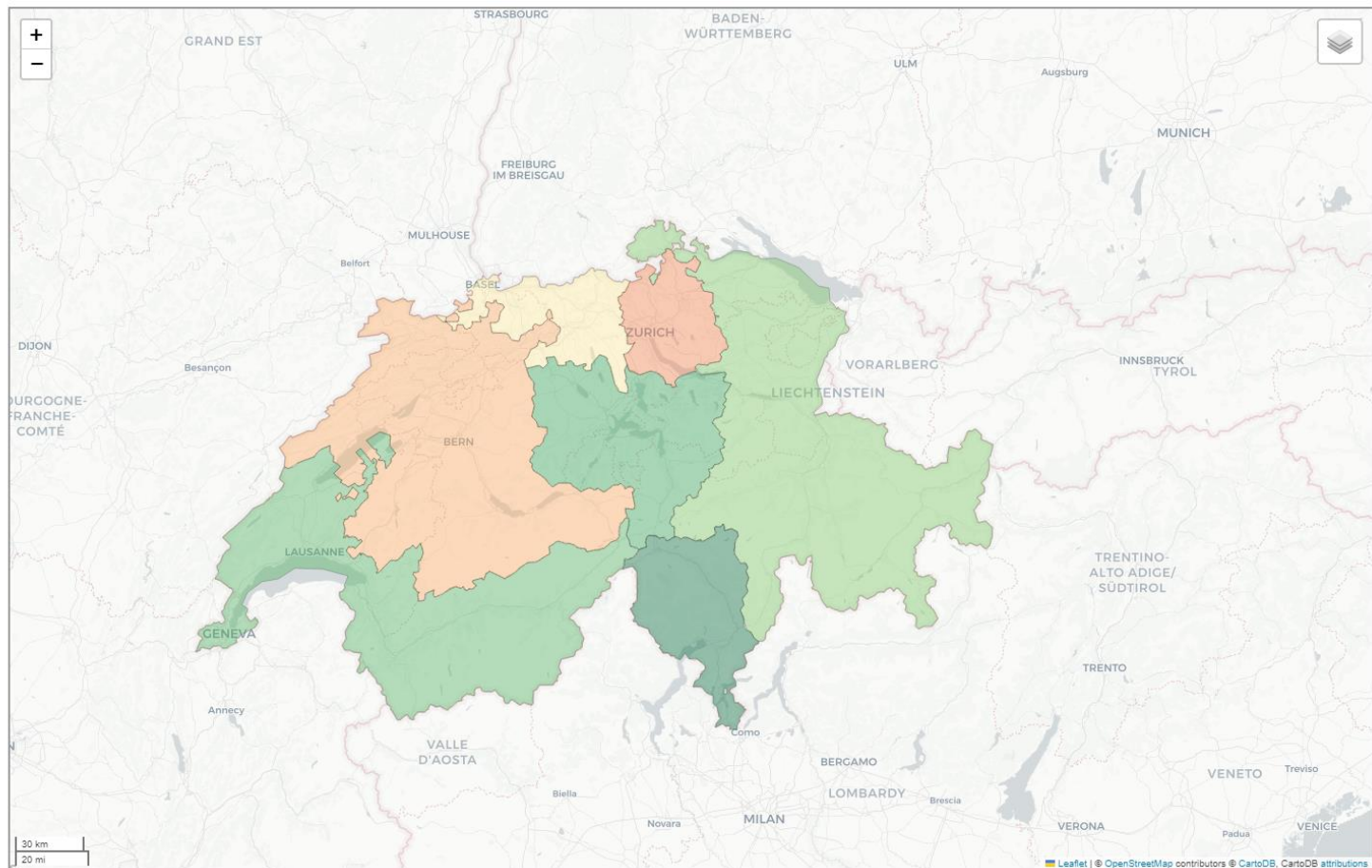
Time Horizon

Time Horizon

Annual Growth



 RUN



AutoSave storm_europe_10synth_tracks_150arcsec_historical_CH_1940_2014_litpop Search (Alt+Q)

File Home Insert Page Layout Formulas Data Review View Developer Help Power Pivot New Tab

Clipboard: Paste, Cut, Copy, Format Painter

Font: Calibri, 11, A^, A^, B, I, U, Merge & Centre, Color, Background Color

Alignment: Wrap Text, Merge & Centre, Horizontal, Vertical, Indent, Decrease Indent, Increase Indent

Number: General, Percentage, Decimals, Thousands Separator, Currency, Accounting

Styles: Normal, Bad, Good, Neutral, Calculation, Check Cell

Cells: Insert, Delete, Format

A1

A B C D E F G H I J K L M N O P Q R S

Information	Value
Space analysis	Switzerland
Exposure/Exposure filename	LitPop
Impact function	Welker 2021
Run timestamp	12/05/23 13:52:50
View	historical
Time horizon	1940_2014
Exposure growth	0

Disclaimer:

The user interface has been developed by EIOPA to facilitate the use of CLIMADA which can be found at: <https://wcr.ethz.ch/research/climada.html>

The user interface is a free software. You can redistribute and/or modify it. The installation and use of the user interface is done at the user's discretion and risk. The user agrees to be solely responsibility for any damage to the computer system, loss of data or any other damage resulting from installation or use of the software. EIOPA shall not be responsible or liable for any damages arising in connection with downloading, installation, modifying or any other use of the software. EIOPA shall assume no responsibility for any errors or other mistakes or inaccuracies in the software, in the results produced by the software or in the related documentation.

License for CLIMADA:

Copyright (C) 2017 ETH Zurich, CLIMADA contributors listed in AUTHORS. CLIMADA is free software: you can redistribute it and/or modify it under the terms of the GNU General Public License Version 3, 29 June 2007 as published by the Free Software Foundation, <https://www.gnu.org/licenses/gpl-3.0.html>. CLIMADA is distributed in the hope that it will be useful, but WITHOUT ANY WARRANTY; without even the implied warranty of MERCHANTABILITY or FITNESS FOR A PARTICULAR PURPOSE. See the GNU General Public License for more details: <https://www.gnu.org/licenses/gpl-3.0.html>.

AutoSave storm_europe_10synth_tracks_150arcsec_historical_CH_1940_2014_litpop Search (Alt+Q)

File Home Insert Page Layout Formulas Data Review View Developer Help Power Pivot New Tab

Clipboard Font Alignment Number Styles

Clipboard: Cut, Copy, Paste, Format Painter

Font: Calibri, 16, Bold, Italic, Underline, Text Color, Background Color

Alignment: Wrap Text, Merge & Centre

Number: General, Percent, Increase/Decrease Decimal Places

Styles: Normal, Bad, Good, Neutral, Calculation, Check Cell

A1	Country results									
	A	B	C	D	E	F	G	H	I	J

Country results

2

1. Exposure

4 Country Total exposed value in EUR

5 Switzerland 2,460,612,029,553.63€

6

2. Results in EUR

8 Peril Country Metric Value

9	Storm Europe	Switzerland	AAL	6,598,299.69€
10	Storm Europe	Switzerland	RPL 1000	588,247,529.60€
11	Storm Europe	Switzerland	RPL 750	576,609,346.72€
12	Storm Europe	Switzerland	RPL 500	533,368,641.84€
13	Storm Europe	Switzerland	RPL 400	460,261,834.74€
14	Storm Europe	Switzerland	RPL 250	413,494,739.43€
15	Storm Europe	Switzerland	RPL 200	362,366,285.90€
16	Storm Europe	Switzerland	RPL 150	319,360,862.56€
17	Storm Europe	Switzerland	RPL 100	251,990,713.94€
18	Storm Europe	Switzerland	RPL 50	50,179,646.59€
19	Storm Europe	Switzerland	RPL 10	4,024,356.68€

20

21 Time horizon: 1940_2014

22 RCP: historical

23

24

25

26

27

28

29

30

31

32

AutoSave | strom_europe_10synth_tracks_150arcsec_historical_CH_1940_2014_litpop | Search (Alt+Q)

File Home Insert Page Layout Formulas Data Review View Developer Help Power Pivot New Tab

Paste | Copy | Format Painter | Clipboard

Calibri | 16 | Font | Wrap Text | Alignment | Merge & Centre

General | Number | Styles | Conditional Formatting | Format as Table

Normal | Bad | Good | Neutral | Calculation | Check Cell

Insert | Delete | Format | Cells | AutoSum | Fill | Clear | Sort & Filter | Editing

A1 | Report for Storm Europe in Switzerland for scenario historical in 1940_2014

Report for Storm Europe in Switzerland for scenario historical in 1940_2014

1. Exposure

Country	Code 2021	NUTS level 2	Total exposed value in EU
Switzerland	CH01	Région lémanique	636,913,785,455.04€
Switzerland	CH02	Espace Mittelland	406,604,147,915.58€
Switzerland	CH03	Nordwestschweiz	395,272,631,442.93€
Switzerland	CH04	Zürich	647,632,194,949.67€
Switzerland	CH05	Ostschweiz	130,479,756,137.96€
Switzerland	CH06	Zentralschweiz	141,746,245,649.78€
Switzerland	CH07	Ticino	101,963,268,002.67€

2. Results in EUR

Peril	Country	Code 2021	NUTS level 2	Metric	Value
Storm Europe	Switzerland	CH01	Région lémanique	AAL	444,740.50€
Storm Europe	Switzerland	CH01	Région lémanique	RPL 1000	44,911,387.53€
Storm Europe	Switzerland	CH01	Région lémanique	RPL 750	36,765,115.85€
Storm Europe	Switzerland	CH01	Région lémanique	RPL 500	34,415,374.56€
Storm Europe	Switzerland	CH01	Région lémanique	RPL 400	31,525,598.80€
Storm Europe	Switzerland	CH01	Région lémanique	RPL 250	25,551,656.75€
Storm Europe	Switzerland	CH01	Région lémanique	RPL 200	23,586,991.26€
Storm Europe	Switzerland	CH01	Région lémanique	RPL 150	20,279,382.48€
Storm Europe	Switzerland	CH01	Région lémanique	RPL 100	13,391,099.67€
Storm Europe	Switzerland	CH01	Région lémanique	RPL 50	5,253,727.46€
Storm Europe	Switzerland	CH01	Région lémanique	RPL 10	226,701.47€
Storm Europe	Switzerland	CH02	Espace Mittelland	AAL	1,738,156.58€
Storm Europe	Switzerland	CH02	Espace Mittelland	RPL 1000	191,528,992.16€
Storm Europe	Switzerland	CH02	Espace Mittelland	RPL 750	178,703,337.24€
Storm Europe	Switzerland	CH02	Espace Mittelland	RPL 500	148,554,730.64€
Storm Europe	Switzerland	CH02	Espace Mittelland	RPL 400	135,720,015.22€
Storm Europe	Switzerland	CH02	Espace Mittelland	RPL 250	107,536,390.48€
Storm Europe	Switzerland	CH02	Espace Mittelland	RPL 200	93,925,566.43€
Storm Europe	Switzerland	CH02	Espace Mittelland	RPL 150	81,508,533.83€
Storm Europe	Switzerland	CH02	Espace Mittelland	RPL 100	50,765,253.34€
Storm Europe	Switzerland	CH02	Espace Mittelland	RPL 50	13,947,423.66€
Storm Europe	Switzerland	CH02	Espace Mittelland	RPL 10	1,022,135.08€
Storm Europe	Switzerland	CH03	Nordwestschweiz	AAL	1,595,731.20€